

Characteristics

Material

- Sheet steel (EN 10130 DC01)
 - Body : 1.2 mm
 - Cover : 1.2 mm
- Galvanized steel (EN 10346 DX51D+Z)
 - Mounting plate : 1.5 mm

Surface Finishing

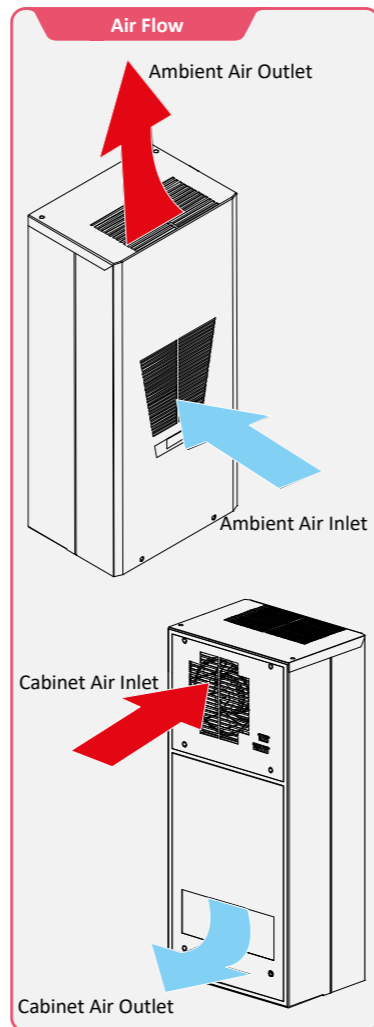
- RAL7035w Powder coating

Protection Degree

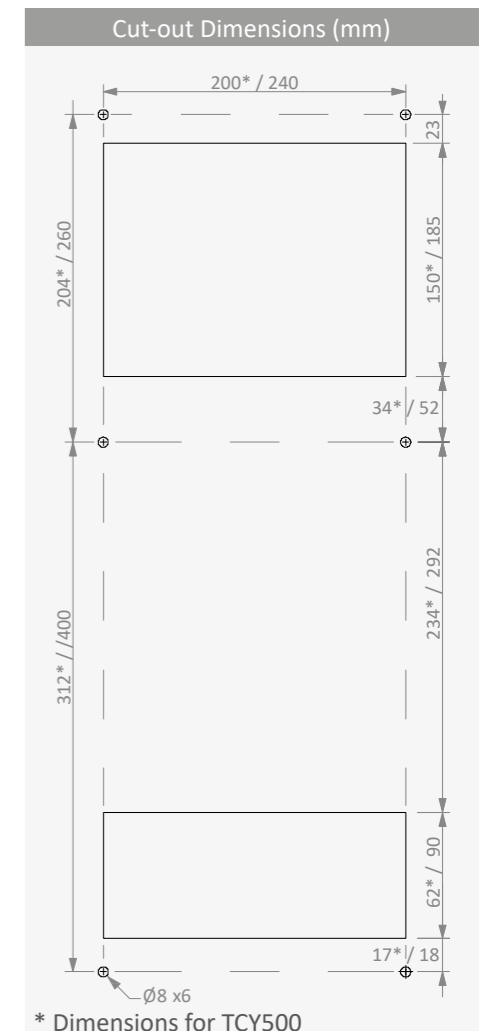
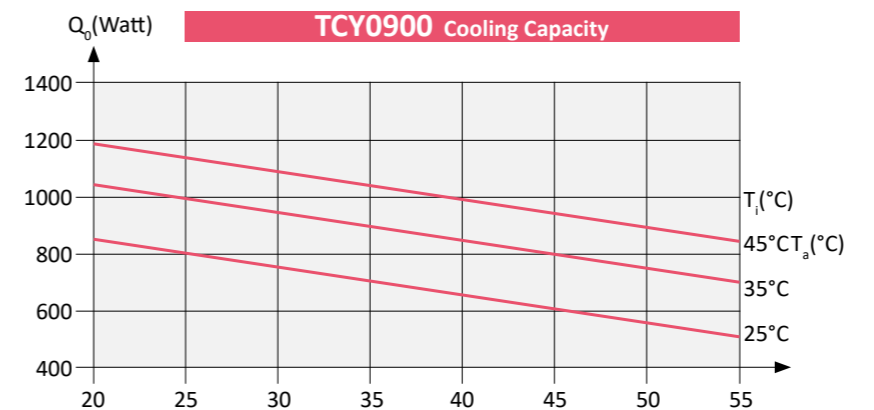
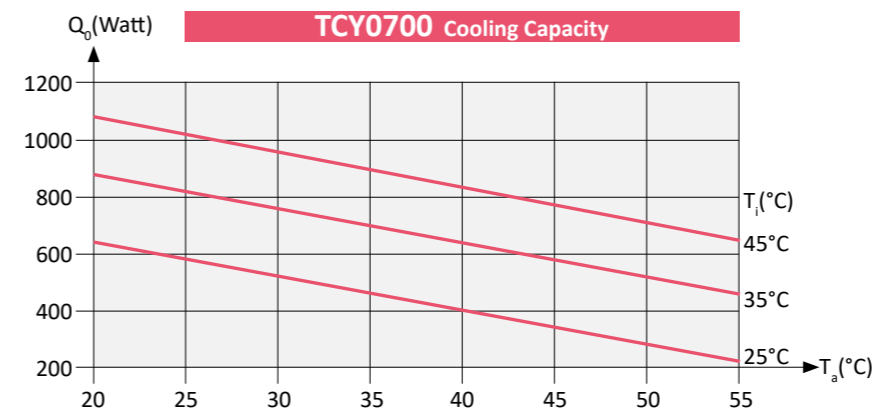
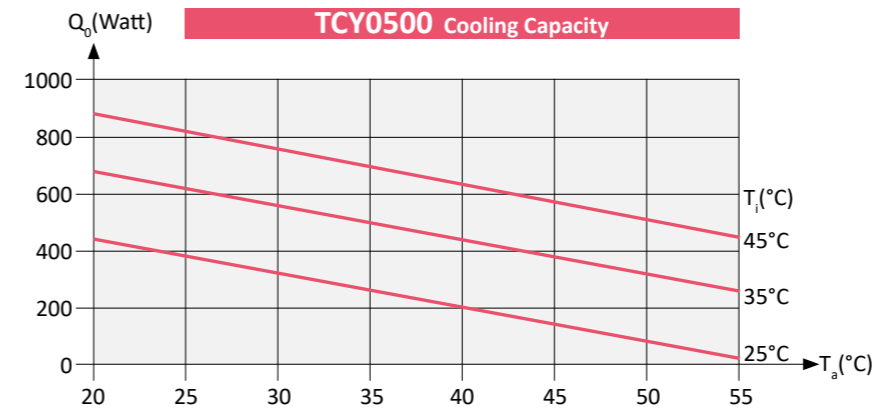
- IP54 Cabinet Side (TS 3033, EN 60529)
- IP34 Ambient Side (TS 3033, EN 60529)

Others

- Digital control unit
- Programmable door and alarm output contact
- Two different power in same size/cut-out
- Large fin space for minimum dust accumulation
- Fast and easy installation
- Condensate drain output
- Maximum air inlet-outlet distance in cabinet side for optimum cooling performance
- Optional easy fixing ambient side dust filter kit
- Stainless steel versions on request



		TCY0500	TCY0700	TCY0900
Cooling Capacity (EN 14511)	L35 / L35	500 W	700 W	900 W
	L35 / L50	300 W	520 W	740 W
Voltage - Phase - Frequency		230 V 1~ 50 Hz		
Power Consumption	L35 / L35	390 W		530 W
Maximum Running Current	L35 / L50	2.4 A	2.5 A	3.5 A
Starting Current		10 A	17 A	21 A
Unimpeded Air Flow (Internal - External)		346 m³/h - 500 m³/h	650 m³/h - 650 m³/h	650 m³/h - 650 m³/h
Control Type		Digital , door switch and alarm output		
Cabinet Temperature Limits		20°C - 45°C		
Ambient Temperature Limits		20°C - 55°C		
Refrigerant Type		R 134a		
Refrigerant Amount		180 g	240 g	350 g
Dimensions (Width/Height/Depth)		292mm / 592mm / 215mm	337mm / 742mm / 242mm	
Weight		24 kg	30 kg	35 kg
Protection Degree (TS 3033, EN 60529)	Cabinet Side	IP 54		
	Ambient Side	IP 34		
Unit Construction		RAL 7035 Electrostatic Powder Coated Sheet Steel (optional Stainless) and Galvanized Sheet Steel		



Q₀ : Cooling Capacity
 T_a : Ambient Temperature
 T_i : Cabinet Internal Temperature

Characteristics

Material

- Sheet steel (EN 10130 DC01)
 - Body : 1.2 mm
 - Cover : 1.2 mm
- Galvanized steel (EN 10346 DX51D+Z)
 - Mounting plate : 1.5 mm

Surface Finishing

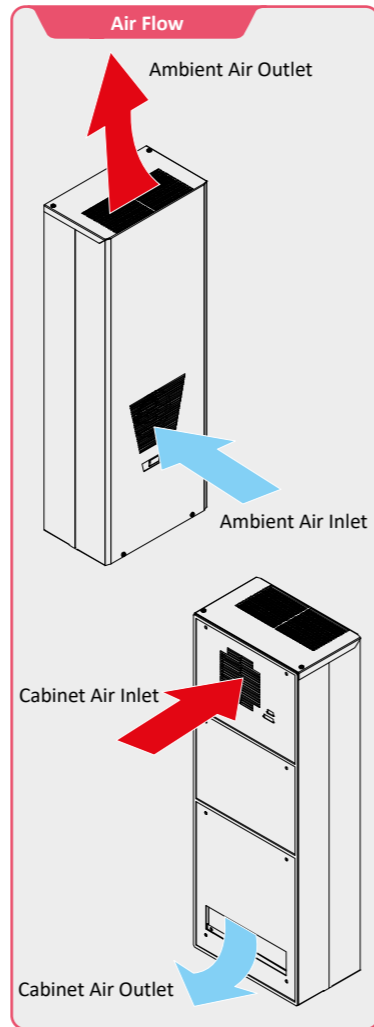
- RAL7035w Powder coating

Protection Degree

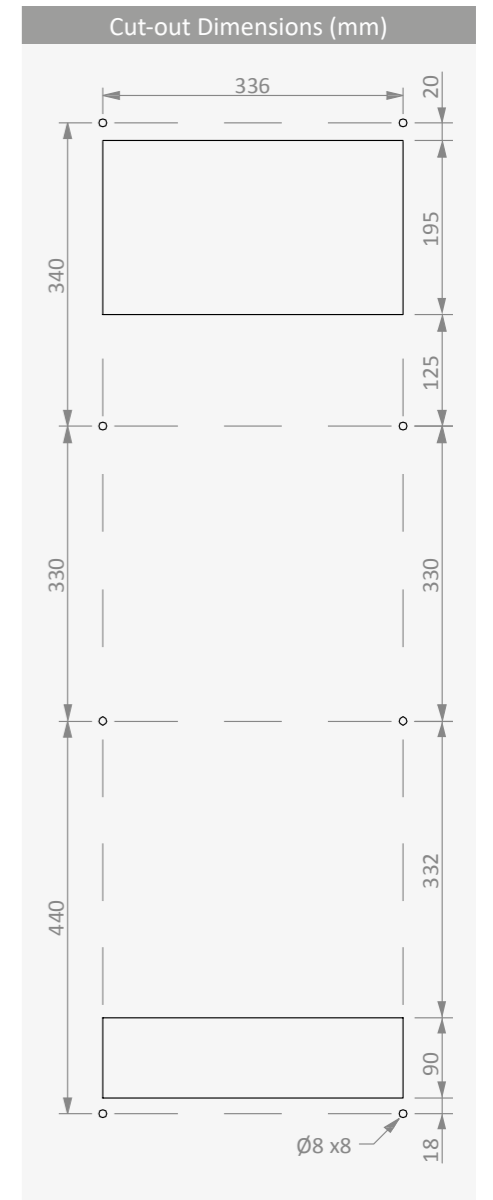
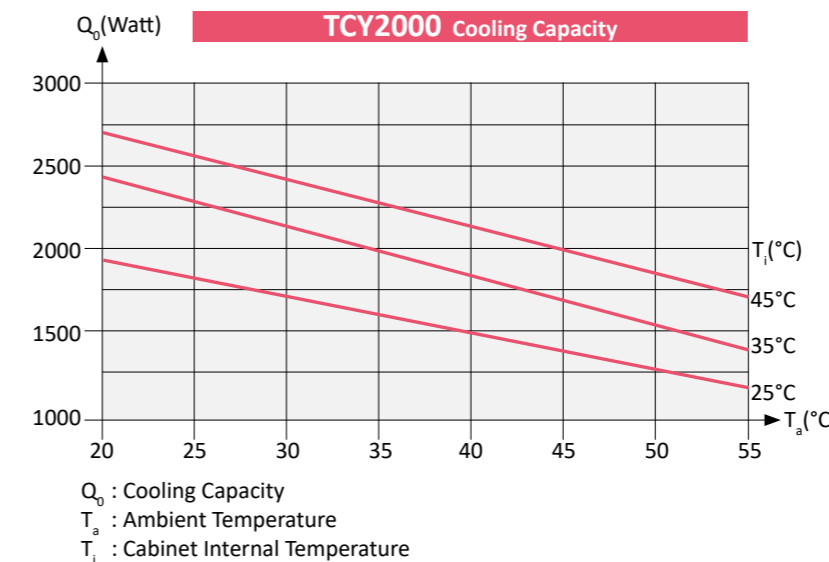
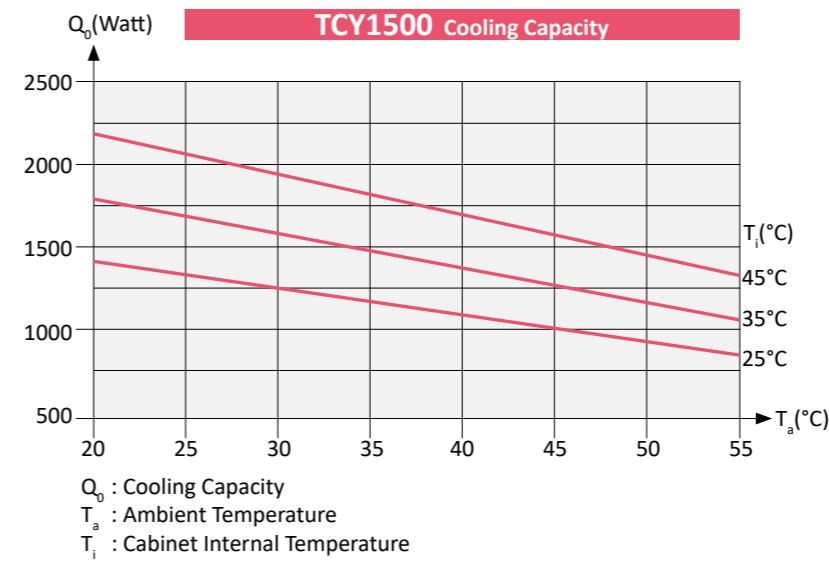
- IP54 Cabinet Side (TS 3033, EN 60529)
- IP34 Ambient Side (TS 3033, EN 60529)

Others

- Digital control unit
- Programmable door and alarm output contact
- Two different power in same size/cut-out
- Large fin space for minimum dust accumulation
- Fast and easy installation
- Condensate drain output
- Maximum air inlet-outlet distance in cabinet side for optimum cooling performance
- Optional easy fixing ambient side dust filter kit
- Stainless steel versions on request



		TCY1500	TCY2000
Cooling Capacity (EN 14511)	L35 / L35	1500 W	2000 W
	L35 / L50	1200 W	1550 W
Voltage - Phase - Frequency		230 V 1~ 50 Hz	
Power Consumption	L35 / L35	860 W	1070 W
Maximum Running Current	L35 / L50	5.7 A	6.5 A
Starting Current		22 A	22 A
Unimpeded Air Flow (Internal - External)		850 m³/h - 850 m³/h	850 m³/h - 1200 m³/h
Control Type		Digital , door switch and alarm output	
Cabinet Temperature Limits		20°C - 45°C	
Ambient Temperature Limits		20°C - 55°C	
Refrigerant Type		R 134a	
Refrigerant Amount		400 g	600 g
Dimensions (Width/Height/Depth)		436mm / 1200mm / 266mm	
Weight		51 kg	59 kg
Protection Degree (TS 3033, EN 60529)	Cabinet Side	IP 54	
	Ambient Side	IP 34	
Unit Construction		RAL 7035 Electrostatic Powder Coated Sheet Steel (optional Stainless) and Galvanized Sheet Steel	



Characteristics

Material

- Sheet steel (EN 10130 DC01)
 - Body : 1.2 mm
 - Cover : 1.2 mm
- Galvanized steel (EN 10346 DX51D+Z)
 - Mounting plate : 1.5 mm

Surface Finishing

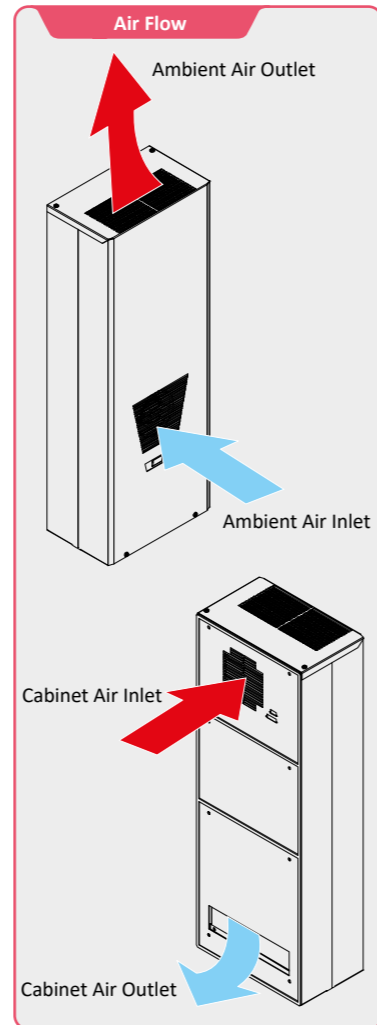
- RAL7035w Powder coating

Protection Degree

- IP54 Cabinet Side (TS 3033, EN 60529)
- IP34 Ambient Side (TS 3033, EN 60529)

Others

- Digital control unit
- Programmable door and alarm output contact
- Two different power in same size/cut-out
- Large fin space for minimum dust accumulation
- Fast and easy installation
- Condensate drain output
- Maximum air inlet-outlet distance in cabinet side for optimum cooling performance
- Optional easy fixing ambient side dust filter kit
- Stainless steel versions on request



		TCY3000	TCY4000
Cooling Capacity (EN 14511)	L35 / L35	3250 W	4350 W
	L35 / L50	1620 W	3650 W
Voltage - Phase - Frequency		230 V 1~ 50 Hz	
Power Consumption	L35 / L35		
Maximum Running Current	L35 / L50	7.13 A	6.7 A
Starting Current		28 A	30 A
Unimpeded Air Flow (Internal - External)		1200 m³/h - 1200 m³/h	1200 m³/h - 1200 m³/h
Control Type		Digital, door switch and alarm output	
Cabinet Temperature Limits		20°C - 45°C	
Ambient Temperature Limits		20°C - 55°C	
Refrigerant Type		R 134a	
Refrigerant Amount		800 g	1200 g
Dimensions (Width/Height/Depth)		436mm / 1300mm / 365mm	
Weight		75 kg	83 kg
Protection Degree (TS 3033, EN 60529)	Cabinet Side	IP 54	
	Ambient Side	IP 34	
Unit Construction		RAL 7035 Electrostatic Powder Coated Sheet Steel (optional Stainless) and Galvanized Sheet Steel	

